

IN CASE OF EMERGENCY CALL:

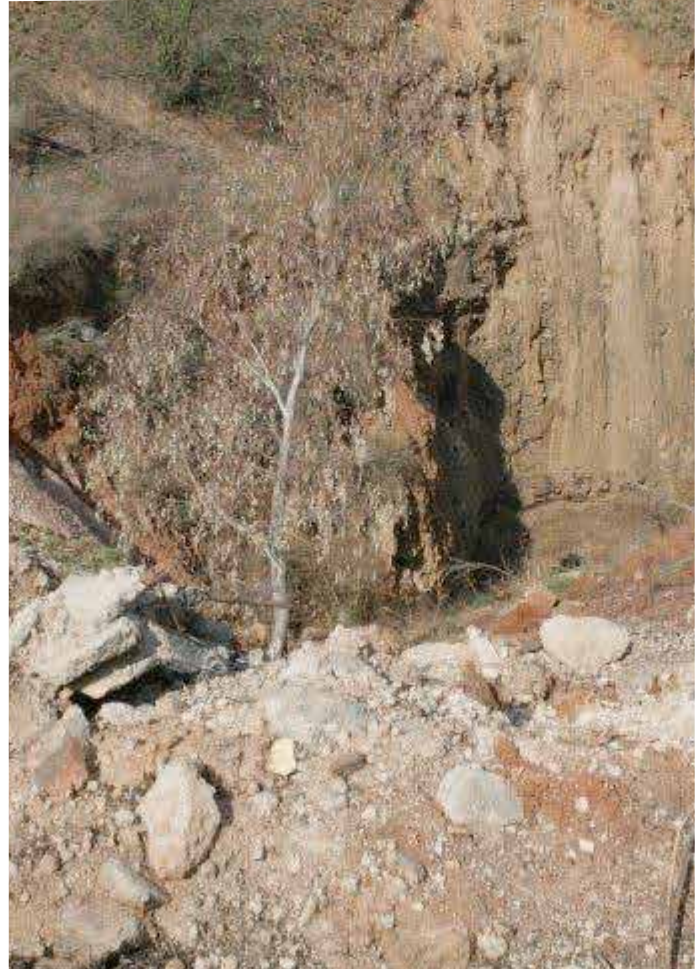
10177 (Land Line)

112 (Mobile)



GAUTENG PROVINCE

CO-OPERATIVE GOVERNANCE AND
TRADITIONAL AFFAIRS
REPUBLIC OF SOUTH AFRICA



**Dolomite Awareness
Programme**

DOLOMITE AWARENESS

Definition: Dolomite is a type of rock that has cavities or cracks in it. It slowly changes into soil when exposed to sun, wind and rain. When rain water runs into the cracks in dolomite rock, it dissolves the rock causing it to disintegrate.

A sinkhole is formed when the layer of soil that covers the dolomite rock collapses. It may take a very long time, even years before this happens.

Part of Gauteng is built on land where dolomite rock is found.

WHAT ARE COMMON SIGNS OF A DOLOMITE AREA

- The dolomite area can be seen by small or big cracks in the soil/ surface.
- The sinkholes are natural holes in the ground, big and small, but they are deep. Some are big enough to swallow a person, car or even a whole house.
- The unstable ground may sometimes cause the ground to shake when standing on it.
- Look out for leaking taps, water pipes, excessive waste of water, cracked and damp house walls.

WHAT MAY CAUSE A DOLOMITE

- Excessive stagnate water
- Burst water pipe dripping over it
- Blocked sewerage pipes running over the surface or
- Leaking taps, water pipes and excessive waste of water

SAFETY TIPS

- Report to the council any surface holes/ cracks that you suspect to be a sinkhole
- Build only on council approved land
- Avoid building or working near what is suspected to be sinkhole
- Attend to the excessive stagnate water
- Report leaking water pipes
- Fix any domestic leaking water taps
- Report all blocked sewer pipes
- Attend to leaking swimming pools
- Refrain from walking or letting children play near what is suspected to be sinkholes.